

Coupling
DRFC

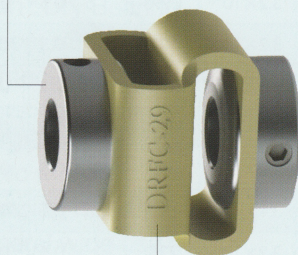


Features

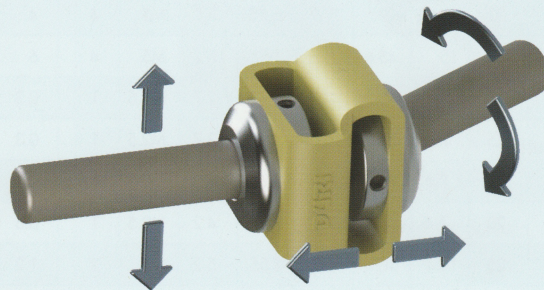
- Integrated flexible Coupling.
- Absorbs excellently large eccentricity, Declination and End play.
- Absorbs shock and vibration.
- Low moment of inertia.

Structure & material

Hub : SCM440



Spacer : Polyurethane



Usage

- Stepping motor
- General wide use motor

Others

- Key seat can not be processed.
- Encourage h7 for tolerance of shaft.

Order method

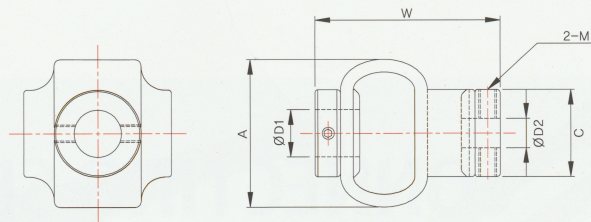
DRFC38 $\varnothing 8 \times \varnothing 12$
Product No. D1 D2



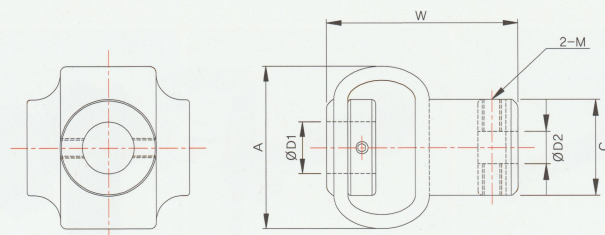
Set Screw Type



Set Screw Type



DRFC 29, 38



DRFC 48, 54

Product NO.	Dimension ($\pm 2\text{mm}$)			Tightening Screw		Max. RPM	Max. Torque	Angle	Parallel	End Play	Mass
				Size	Torque						
	A	W	C	M	N · m	min^{-1}	N · m	$^{\circ}$	mm	mm	g
DRFC-29	25	28	18	M4	1.7	3,000	0.35	10	2	1.5	20
DRFC-38	32	35	22.5	M4	1.7	3,000	1.35	10	2.5	2	40
DRFC-48	43	50	26	M5	4	3,000	1.8	12	2.5	2	60
DRFC-54	50	59	29.5	M6	7	3,000	4.5	12	3	2	140

Mass and Moment of inertia are measured with max bore size.

Product NO.	Standard Inner diameter (D1, D2) (mm)									
	4	5	6	8	10	12	14	15	16	
DRFC-29	•	•	•	•	•					
DRFC-38			•	•	•	•				
DRFC-48				•	•	•	•			
DRFC-54					•	•	•	•	•	•